

BRIEF TO THE PEOPLE OF SOUTH DEEP

WEEK OF 9 DECEMBER 2021



Benford Mokoatle
VP: South Deep

LET'S TALK

December Break Travel Logistics and Return to Work Process

Dear Colleagues,

Over the last few days, we have seen a significant increase in the number of COVID-19 positive cases at the Mine. With people planning to travel or spend more time with their families over the holiday season, the number of positive cases has the potential to skyrocket. This is a timely reminder for us, that we have an accountability to stop the spread of COVID-19 by acting responsibly.

As many of us travel over the festive season, the virus has a much higher chance of spreading

It is very positive that over 90% of our people are vaccinated but we still need to take extra precautions to ensure we keep ourselves and loved ones protected, especially as there is a new COVID-19 variant called Omicron which is spreading rapidly and most provinces have entered the fourth wave of COVID-19 infections. We encourage those who have been fully vaccinated to download their vaccination certificate as proof of vaccination. The fact that you have been vaccinated may not protect you from being infected by COVID-19, but it will definitely protect you from serious illness and in the overwhelming majority of cases prevent hospitalisation. We are convinced now more than ever that vaccines indeed do work. In addition to vaccinations, the wearing of masks, sanitising your hands frequently and avoiding crowded places is the right thing to do – for you, your family and loved ones, your colleagues, and the community.

TRAVEL TO NEIGHBOURING COUNTRIES

For those people who plan to travel across the South African border during this time:

- 1** You will need to comply with all Government-issued COVID-19 travelling requirements.
- 2** If you travel to a neighbouring country, you are expected to follow all travelling regulations - wearing masks at all times; practising social distancing in public spaces; and regularly washing or sanitising your hands.
- 3** At the border from South Africa, you will be screened and need to complete a traveller health questionnaire.
- 4** If your screening shows possible exposure to COVID-19 or shows any signs or symptoms of COVID-19, you may be tested. If the test is positive you may not be able to exit South Africa and may need to isolate.
- 5** At the border back to South Africa, you must produce a negative PCR test taken within 72 hours before re-entry and conducted by a certified medical practitioner with their name and signature on the test result. If you do not provide a valid negative PCR test result, you will undergo testing at the point of entry and if the result is positive you may need to quarantine at an approved facility, at your own cost.

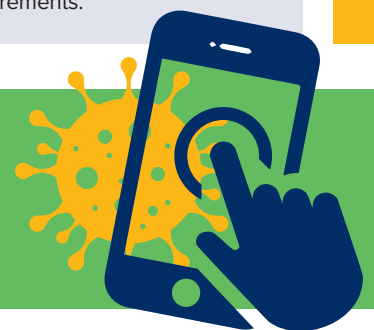
You will not qualify for leave due to border post delays.

Under these circumstances, absences will be regarded as unauthorised leave as employees are aware of the requirements and expected to plan accordingly.

You will not be allowed to use South Deep's testing facilities to obtain a negative PCR test for your own travelling requirements.



Download your COVID-19 Vaccination Certificate on South Africa's "vaccine passport" official portal to ensure you have your vaccination certificate at the tip of your fingers. Use the website link or scan the QR code <https://vaccine.certificate.health.gov.za/>



Safety



Integrity



Respect



Responsibility



Innovation



Collaborative
Delivery



GOLD FIELDS

RETURNING BACK TO WORK

These are the steps all employees need to take when returning to work after the December break:

- 1 All employees will need to complete the special declaration form when they return to work
- 2 The form will be available from mine overseers and foremen and we recommend you take the form with you when you go on holiday to avoid long queues when you return
- 3 Employees who travelled across borders/ provinces or employees that have any flu-like symptoms will need to do a rapid COVID-19 test which takes ± 15 minutes
- 4 If the test is negative, you will receive a green sticker and proceed to work
- 5 If the rapid test is positive you will receive a red sticker and must go for a PCR test at the COVID-19 testing station at Twin Shaft and isolate until your PCR result is available
- 6 Employees may be randomly selected for rapid tests, irrespective of the answers provided on the declaration form
- 7 We will increase the frequency and number of rapid and PCR tests for the first two weeks after we return from the break

South Shaft employees will **NOT** be required to travel to Twin Shaft for screening and testing but will be screened and tested at the South Shaft COVID-19 Testing Station next to the Mine Residence.

We remind all employees to be honest on their declaration forms so that we protect ourselves and our colleagues.



IN OUR HANDS

Falling from Heights

During this month we are exploring the MUE **Falling from Heights**, which is one of the most common causes of serious injuries and fatalities in the workplace. These are the Critical Controls to prevent Falling from Heights:

Critical Control 1
Only individuals trained in the fall protection plan and equipment, declared competent and fit, are allowed to work at heights



Critical Control 2
A working at heights permit and emergency preparedness and response plan is in place for working at heights over 2m



Critical Control 3
Fall protection for working on a ladder at heights over 2m



Critical Control 4
Use fall protection and restraint systems



Critical Control 5
Adequate platforms and scaffolding that are inspected and well maintained



Critical Control 6
Mobile platforms are equipped with safety devices



COVID-19 TESTING UPDATE

The new Omicron variant has resulted in a huge jump in positive cases, 109 up from last week. We have increased our testing and we urge employees who have even mild flu-like symptoms to stay at home and get tested before coming to work.



	At risk		Returning to work		Risk-based sampling		Persons under investigation		
	This week	Total	This week	Total	This week	Total	This week	Total	Total
Tested (1 st round)	0	181	0	2,539	0	2,316	0	142	5,178
Tested (2 nd round)	0	131	0	685	0	5,795	0	41	6,652
Tested (3 rd round)	0	26	0	788	0	3,868	0	29	4,711
Tested (4 th round)	0	139	0	611	0	4,825	0	74	5,649
Tested (5 th round)	0	32	0	542	0	3,441	0	25	4,040
Tested (6 th round)	10	46	12	348	459	1,598	7	16	2,008
Total tested	10	555	12	5,513	459	21,843	7	327	28,238
Positive	1	16	5	304	81	1,389	5	233	1,942
Negative	7	537	3	5,205	250	20,326	2	94	26,162
Awaiting Results	2	2	4	4	128	128	0	0	134
Deceased	0	0	0	0	0	4	0	11	15
Active cases	0	1	0	9	0	96	0	14	120
Recovery Testing	0	4	0	18	0	90	0	33	145
Employees in Hospital	0	0	0	0	0	0	0	0	0
Recoveries									
Recovered as per NICD	0	15	0	295	6	1,293	0	219	1,822
Recovered (back at work)	0	15	0	295	4	1,289	0	217	1,816
Unfit for Work/Sick leave	0	0	0	0	0	1	0	2	3
Medical Assessment in Progress	0	0	2	2	1	1	0	0	3
Not yet Assessed	0	0	0	0	0	0	0	0	0
Vaccination Programme									
Number of 1st vaccinations		4,415							
Number of 2nd vaccinations		3,919							

BENFORD

Benford Mokoatle
VP: South Deep