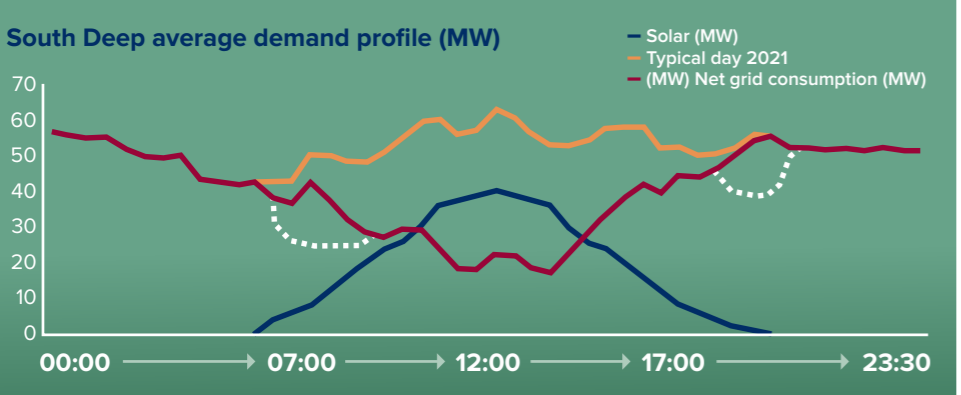
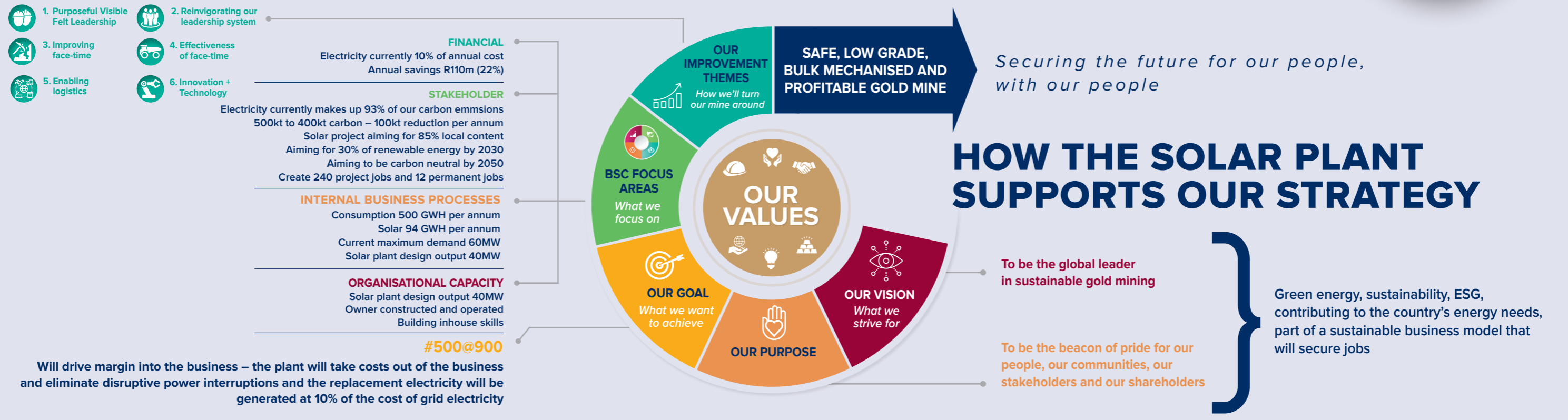
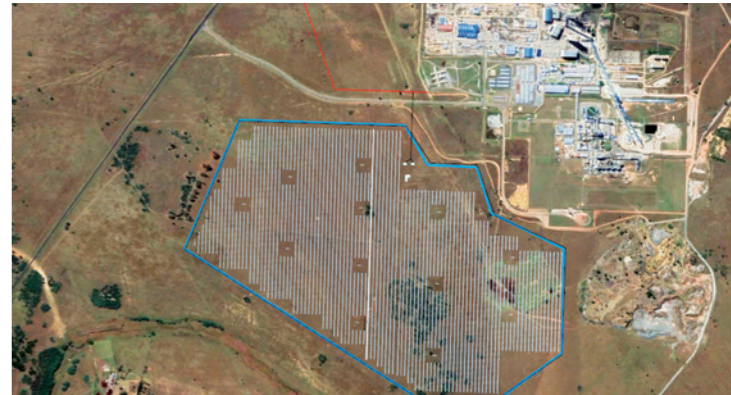


# SOUTH DEEP SOLAR PV PLANT



## KEY HIGHLIGHTS

115,776 solar PV panels	268 x 150 kW inverters
118ha (200 soccer fields)	22% of South Deep's total electrical demand and more than R110m of electrical costs will be absorbed by the Solar PV Plant
339 kW generation capacity per hectare	Attractive Payback
2,144 mounting structures	Carbon footprint reduced by 100kt per annum



### PROJECT TIMELINES

 Application to NERSA <b>June 2020</b>	 South Deep public participation phase <b>November 2020</b>	 ESKOM Estimate and budgetary quote <b>18 February 2021</b>	 NERSA Final approval <b>25 February 2021</b>	 Gold Fields Board approval <b>May 2021</b>	 Construction <b>Q3 2021- Q2 2022</b>	 Commission <b>Q2 2022</b>
--	---	---	---	---	---	----------------------------------

Reliability	Availability	Cost-effective	Clean
-------------	--------------	----------------	-------